

Wycombe High School



Into The Sixth Form 2012

Fortiter, Fideliter, Feliciter

Dear Parents and Students

Welcome to Wycombe High School's Sixth Form!

We believe that our Sixth Form offers a stimulating, fulfilling, memorable and happy experience. This pack is intended to give all prospective Sixth Formers and their parents an insight into what we can offer, and to provide you with some advice on how to select your A Level options.

We want our Sixth Formers to receive the very best education. Our A Level results are among the best in the country. Excellent teaching, backed by comprehensive guidance and advice, mean that almost all of our students go on to their first choice of university and degree course. Take a look at the 2011 A Level results and Leavers' Destinations towards the end of this booklet.

Being a part of our Sixth Form is, however, so much more than just the pursuit of academic qualifications. It is an exciting time for you to mature and develop personally as a member of a strong community. You will contribute to, and benefit from, all the opportunities available. You will develop your skills through our rich extra-curricular and enrichment programme, details of which are included in this booklet.

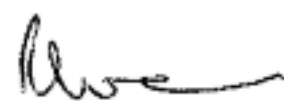
For Year 11 students already at Wycombe High, entry into our Sixth Form is a natural next step; you will build upon the firm groundwork already laid down and move into a more adult and independent environment with the added bonus of knowing and being known by the staff. We are also delighted to welcome new entrants to Wycombe High School. In 2011, 37 students joined our Sixth Form from a range of independent and state schools. All of them very quickly settled in and have made lasting friendships.

I believe that we offer a very special Sixth Form experience. Our Ofsted inspection (April 2007) rated Wycombe High School's Sixth Form as 'Outstanding'. More important than Ofsted, perhaps, are the opinions of our students. In the 2011 Exit Survey, 84% of Year 13 said that they had thoroughly enjoyed their time in the Sixth Form. Among the many unsolicited compliments were the following:

- Students are encouraged to fulfil their potential
- We are treated as adults and our opinions are valued
- There is great community spirit
- The staff are friendly and approachable and always there when you need support
- The teaching staff are amazing!

It gives me great pleasure to invite you to our 'Into the Sixth Form' Evening on Wednesday 19 October. I very much look forward to welcoming you to the school next September and to working with you over the next two years.

Yours sincerely



Ruth Green
Head of Sixth Form

Contents

	Page No
Ofsted Inspection Report – April 2007	1
General Information about WHS Sixth Form	2
• A Typical Week	2
• Our Facilities	2
• Pastoral Care	2
• Curriculum	3
• Enrichment Programme	3
• Voluntary Work	4
• Leadership Opportunities	4
• Extra-Curricular Opportunities	7
Choosing A levels at Wycombe High School	8
• Selecting your Options	9
• To assist in your Decision Making	10
• Constraints on your Choices	11
• Frequently Asked Questions	11
Entry Requirements into WHS Sixth Form	13
Application Procedure	14
Higher Education	15
Appendix 1:	
2011 A Level Results	16
Appendix 2:	
2011 Leavers' Destinations	17 - 21
Appendix 3:	
Choosing A Level subjects with a view to Higher Education & Careers	23 - 27
Appendix 4:	
Dates and Procedures	28



Effectiveness and Efficiency of the Sixth Form

Grade: 1

Sixth Form provision is outstanding. Leadership of the Sixth Form is innovative, very effective and a major reason for its continuing success. The majority of the students stay on in the Sixth Form and completion rates of courses are very high. Independent learning is a strong feature of Sixth Form life. Students learn in a secure and positive learning environment which is enriched by an excellent curriculum that is regularly reviewed to meet their needs. Tutors support students' pastoral and academic needs very effectively to complement the outstanding subject teaching. Hence, students make excellent progress and they achieve exceptionally high standards.

There is a regular and rigorous system for reviewing students' progress which ensures that early support is provided for those who are not working to their potential. A Year 13 student liked 'the fantastic support structure through which the teachers are always there to guide and praise students in a respectful and caring manner'. Sixth Formers freely give their time for the benefit of the whole school. For example, prefects organise the school Sports Days and act as Assistant Tutors. This contributes to the exceptionally good relationships that exist within the Sixth Form and in the wider school community.

Inspection Report: Wycombe High School Ofsted, April 2007



General Information about WHS Sixth Form

A Typical Week

We operate a ten-day timetable cycle of fifty periods, each one hour long. Over a fortnight, you will generally have eight lessons in each of your AS subjects. In addition to AS subjects, you may spend up to five hours on enrichment activities (although Young Enterprise operates outside school hours), and you will have at least one PE lesson a week. A typical Year 12 student might expect to have up to ten study periods a fortnight. Year 12 students are expected to remain on site during the school day, except for lunch or external community service. Private study facilities are available in the Wainwright Learning Centre and Miller Block, while the Common Room provides a venue for relaxation.

Lessons apart, there is a great deal to occupy you. House Assemblies and Sixth Form Assemblies are compulsory and are held once a week, usually in the Main Hall. A rich range of school society, drama, musical and sporting opportunities take place at lunch and after school, while many Sixth Formers volunteer for additional duties as Prefects, Student Ambassadors and Academic Assistants.

Our Facilities

Our Sixth Form Centre is located in the Miller Block. As well as classrooms and offices, the Miller Block contains a large Common Room with attached kitchen, a Study Area, a Lecture Theatre, a computer room that is exclusively for Sixth Form use, and a Careers and University Resources Room. All Sixth Formers may rent a locker, while there is a Sixth Form car park to the rear, for which you may purchase a car parking licence. A member of the Student Leadership Team assists the Head of Sixth Form in the management of the Miller Block.

In addition, you may make use of any of the wider school facilities, which include the purpose-built learning facilities in the Wainwright Centre, the Drama Studio, and the Sports Block, which includes a Fitness Studio that is much frequented by Sixth Formers. Additional ICT facilities abound.

Pastoral Care

At Wycombe High School we aim to produce mature, confident, articulate students, ambitious to achieve their own potential, but also altruistic and ready to contribute to the society in which they find themselves. In all this, pastoral care plays an important role.

Tutor groups are small and organised on a 'vertical' basis, with students from Year 7 through to Year 13. Each form is part of a House: we have six Houses. Internal applicants will stay with their existing tutor group and House; external applicants will be allocated to a tutor group and House. Tutorial sessions are held five times a week, when tutors carry out pastoral work on an individual basis, or run a whole tutor group meeting. Each student has a one-to-one personal tutoring session with her tutor at least each half term. Additionally, three 'Personal Enrichment Days' are held over the course of a year. These cover a comprehensive programme including lessons on UCAS applications, sexual health, finance, and cancer awareness.

The move from main school to the Sixth Form is a big one, and we work hard to ensure that you maximise the opportunities presented and realise your talents and ambitions. To this end, an Induction Day is arranged for all Sixth Formers and an additional one for those Sixth Formers new to Wycombe High School. We recognise that occasionally some students find themselves encountering difficulties. We will do whatever we reasonably can to provide you with the information and support you need to find appropriate advice to help you solve any issues. We also have a Learning Mentoring Team to help in such an eventuality.

We are fortunate in having a designated Pathways Advisor who is based in the Miller Block. She works with individual students in Key Stage 4 and the Sixth Form on issues such as career guidance and university application.

General Information about WHS Sixth Form

Curriculum

The Sixth Form Curriculum at Wycombe High School is based on A Levels. These usually consist of four modules of approximately equal size. Two of these make up an Advanced Subsidiary (AS) qualification, representing the first half of the A Level course. AS exams take place in January and May of Year 12. The other two modules, known as A2, represent the second half of the full A Level course, and are examined in January and June of Year 13.

WHS students study three, four or five AS subjects in Year 12 depending on their ability, as measured by their best eight full GCSEs. We expect most of our Sixth Formers to follow a programme starting with four AS subjects in Year 12, and continuing with three of these subjects to A2 and thus full A Levels in Year 13. Most students will therefore complete qualifications in three A Levels and one AS.

However, we are flexible and aim to meet individual needs which may involve reducing, or extending, this workload. Students with fewer than 391 points from their best eight GCSEs start with three AS subjects on Year 12, and may pick up another AS in Year 13. Students with more than 446 points may do five AS subjects in Year 12, and then do four A2 subjects in Year 13. The school will determine the number of AS / A2 Levels a student should be undertaking; the Headteacher will be the final arbiter.

Full details of the options available and advice on selecting options are contained in this booklet and in the Options Flyers.

Enrichment Programme

As well as A Levels, we ask all Year 12 students to participate in the Wycombe High School Sixth Form Enrichment Programme which has five parts.

These are, in brief:

- **Personal Enrichment Programme** Students are taken off timetable for three Personal Enrichment days over the year. These cover issues such as wellbeing and UCAS. We have also adopted what we hope is an imaginative and interesting

approach to the legal requirement to cover Philosophy and Ethics. You will attend five sessions devoted to philosophical and ethical issues, such as euthanasia, 'Women's Voice', 'Does God Exist?' and a 'Question Time' panel with representatives from different faiths.

- **Physical Exercise** Students are given the challenge of completing 60 hours of physical exercise in school in one year to encourage a healthy work life balance. Year 12s have one PE lesson a week. Various options exist including cheerleading, fencing, yoga, badminton, trampolining, football etc. There are also numerous sports clubs and dance groups to join, many of which just want you to be enthusiastic: ability is less important than a willingness to get involved. You can also use the Fitness Studio.
- **Enrichment Options** Students who are only taking three AS levels are required to complete one or two enrichment options from the following list: GCSE Italian or Latin (from scratch), AS Critical Thinking, AS General Studies, Sports Leadership Award, Creative iMedia, or Young Enterprise. Students who are taking four AS subjects may do one enrichment option if they wish. However, musicians who are both committed in a major way to school extra-curricular music and to the County or National Youth orchestras can count this as their enrichment option.
- **Extra-Curricular Involvement** Students are challenged to spend at least 30 hours' involvement in one or more of the many and varied extra-curricular opportunities on offer in the school. Such activities will allow them to develop and extend their own personal and interpersonal skills and are important in developing a sense of whole school community. To inspire them, a full programme of what is on offer this year at present is included later in this prospectus. There is every opportunity for students to think creatively and develop their own talents and interests within the Sixth Form and within the school as a whole.

- **Community Service** We ask that you complete a minimum of 60 hours of Community Service. This can be completed in or out of school, in one area, or across several, in one term or over several. There is a quite astonishing variety of ways in which students can complete Community Service, including voluntary work outside school and assisting younger students in school.

Voluntary Work

We are very happy for you to undertake some voluntary work in your free periods. There are many organisations, even within walking distance, which need your help and to which you can contribute as well as developing life skills and experiences.

Voluntary work is very rewarding. As well as helping others, you can build your confidence and self-esteem. You could even find yourself more employable as a result. Voluntary work is essential for those of you contemplating a future in, for example, medicine, veterinary medicine, teaching, physiotherapy or social work.

You can be involved in any of the following:

- **WYA Volunteer** Students can make their own arrangements through Wycombe Youth Action, which arranges volunteering projects from environmental projects to staffing the local summer radio station.
- **Helper at Wycombe Hospital** Every year we have a small number of opportunities for students to undertake work experience at the local hospital. This is only for students aged 17+ considering reading Medicine, who have very good / excellent GCSE results. The girls have to apply directly to the Hospital to shadow for a day and may then be invited to do a short stint on the wards.
- **Assistant at Maplewood** This is a Special Needs Unit for 14-19 year old students based at Maplewood School, Cressex Road, round the corner.

- **Assistant at Hillcrest or Verney Avenue** These are local day care centres for adults with disabilities. Students help in various activities, like creating a pantomime, drama or music/dance activities or just playing some games and chatting.

- **Assistant at Horizons** This is an after-school sports club for children with disabilities, which meets on Tuesday, Wednesday and Thursday nights. Volunteering with Horizons does take commitment as the children to whom you will be assigned, under the supervision of a coach, get very, very attached and really look forward to your help and encouragement with their tennis, athletics or swimming. Volunteers are selected in the Spring of Year 11.

- **Assistant in local primary schools** You can be a volunteer at a primary school close to school or close to your home as long as no lessons are missed.

- You can also make your **own arrangements** for voluntary work. For example, in the past some have worked at Oxfam.

Leadership Opportunities

A major advantage of being in a Sixth Form is that you are a senior member of a wider community, with all the leadership opportunities that this entails. At the least, younger members of the school will see Sixth Formers as role models, and we hope that you will take this responsibility seriously.

Beyond that, our Sixth Form provides you with many opportunities to develop your leadership talents and abilities. These include: acting as a SPA or Academic Assistant; being a Prefect; directing one of the Year 8 plays; running a club or activity; representing your year group on the School Council; and working as a Young Enterprise Managing Director. Volunteering for any of these roles will allow you the opportunity to develop many different personal skills whilst also ensuring a closer link between the Sixth Form and the main school students.

General Information about WHS Sixth Form

- **Student Leadership Team** At present we have a team of twelve, all of whom are in Year 13. Any Year 12 student (as long as they have a sound record) can apply to be considered for the SLT. A selection procedure takes place early in the summer term of Year 12 - it involves a series of hopefully amusing activities and tasks, following which all participants vote. Unusually, students themselves select the SLT, and the twelve successful candidates then choose their roles, including that of Head Girl, and the six House Captains.
- **Deputy House Captains and Form Captains** These roles involve working closely with the House Captains and applications are invited from Year 12 students.
- **Senior Prefects** Forty Year 12 students become Senior Prefects. They are on patrol duty one lunchtime a week or library duty before school once a week. Tact and humour are required! The Student Leadership Team organise the selection procedure for Senior Prefects.
- **Subject Captains** We also have Maths, ICT, Science, Music and Languages Captains. These are selected by the departments involved: applications are invited from any student in the summer term of Year 12.
- **Sports, Dance and Gym Captains** These are selected by the PE Department: applications are invited from any student in the summer term of Year 12.
- **School Councillors** Each House elects two Year Council Representatives, for each of Year 12 and 13. Students have to attend two to three meetings a term and they may well have delegated tasks to complete between meetings, and be asked to sit on interview panels. They may also be asked to represent their entire Year group at a full School Council.
- **ACAs - Academic Assistants** As one of these, you would help a younger student experiencing difficulties with a specific subject. You might offer

a Year 7 student one-to-one help with Maths or Languages, for example, or help out in Year 8 Art lessons.

- **Social and Personal Assistant (SPA)** Every main school learning group in Years 7-9 has two attached SPAs from Year 12. SPAs go and visit their students at least three times a week. They help organise fund-raising activities, teach some PSHEE lessons, and so much more. It's all ideal practice for the future teachers and managers among you not least because SPAs receive formal training as listeners and mediators. SPAs are selected in the Summer term of Year 11.
- **Student Ambassadors** Year 12 and Year 13 students can volunteer to work on Reception and to run tours for prospective parents during their study periods. Many Year 12s also volunteer to act as tour guides on Open Evenings and on the 'Into the Sixth Form' Evening.
- **Development Ambassadors** Any Year 12 may apply to the Development Director to become a Development Ambassador. This role involves marketing and selling WHS branded products at school events and producing promotional materials to support the fund raising programme of the school.
- **Guild Captain** This role is reserved for a member of Year 13 and involves working closely with our very active Guild of 'old girls'.
- **Library Assistants, Careers Assistants** Students who love books, organising shelves, helping with queries, may act as volunteers in the Learning Centre and in the Careers Library.
- **Clubs and Activities** Some of the best clubs in recent years have been initiated and run by Sixth Form students. Islamic Union, Christian Union, the Bollywood Club, the History and Classics Society, the Debate Society and the Jazz Band are all organised by Sixth Formers.

- **Theatre Directors and Backstage Hands** The Year 8 Thespian Extravaganza is held in the Autumn term: each Year 8 form has two Year 12 Directors, and performs its play before an audience of the whole year. Sixth Formers also organise props, costumes, lighting and sound effects for the school plays and musicals.

Dress Code in the Sixth Form

We do not have a uniform in the Sixth Form because we want students to prepare for university by being able to learn how to express their own style and individuality in a safe environment. However, we would like them to look **neat, tidy**, and most importantly, **appropriate** for a school environment. They are inevitably role models to the younger years in the school and we ask them to take this responsibility seriously. We do, therefore, insist on the following, both in school and when representing the school or on a school trip / field course:

- No excessive exposure of flesh
 - no spaghetti or shoelace straps to tops or dresses
 - no strapless tops or dresses
 - no plunging necklines
 - no bare midriffs
 - no flip flops
- Leggings should not be worn as an alternative to trousers
- Mid-length skirts, shorts and dresses can be worn
- No T-shirts which have inappropriate or coarse comments/logos on them
- No coats around school - please see that coats stay in Miller or in lockers
- Visible piercings, other than in the ear lobes, and tattoos / body paintings are not permitted
- Unnatural hair colouring is not permitted; the interpretation of 'unnatural' is as follows:
 - a colour that is not found within the natural hair colour spectrum, ie a bright, extreme or vivid colour
 - a combination of colours that is easily visible or stark in contrast

- If hair extensions are worn, no beading is permitted. Extensions must also be in a colour that naturally blends with the hair
- Garments covering the face or whole body are not permitted
- Muslim students who wish to wear hijabs may do so.

The Headteacher is the final arbiter of what is acceptable.

We want to show the Sixth Form and the school at its very best and instil in individuals a sense of what is appropriate, and so on school functions we would like Sixth Formers to dress in a more professional manner than their normal day wear. All Sixth Formers shall wear black and white on formal occasions.

Choosing A Levels at Wycombe High School

At the moment, A Levels are still the preferred qualifications for admission to most Higher Education establishments. At Wycombe High School we currently offer thirty-one subjects at A Level, and a further four at AS. Most of these are subjects studied at GCSE, though there are several 'new' subjects. You will see from the table below that we also work in cooperation with neighbouring schools (the South Bucks Partnership) to extend the range of choice.

We require all Year 12 students to study three, four or five AS subjects depending on their ability, as measured by the points from their best eight full GCSEs (where A* = 56, A = 52, B = 46 etc). Students doing three AS subjects are required to do one or two of the enrichment options on offer. Students doing four AS subjects may take one enrichment option, and are strongly encouraged to do so. The school will determine the number of AS / A2 Levels a student should be undertaking; the Headteacher will be the final arbiter.

360 – 391 points	3 AS subjects and one / two enrichment options
392 – 445 points	4 AS subjects and an enrichment option if desired
446 points +	5 AS subjects , if they wish

The **AS options** on offer for 2012 are as follows:

BIOLOGY BUSINESS STUDIES CHEMISTRY CLASSICAL CIVILISATION COMPUTING* DANCE** DRAMA AND THEATRE STUDIES ECONOMICS ENGLISH LITERATURE FILM STUDIES (AS only) FINE ART FOOD TECHNOLOGY***	FRENCH FURTHER MATHS GEOGRAPHY GEOLOGY (AS only) GERMAN* GOVERNMENT & POLITICS HISTORY - EARLY MODERN HISTORY - MODERN ICT LATIN MATHS - STATISTICS MATHS - MECHANICS	MUSIC MUSIC TECHNOLOGY* PHILOSOPHY & ETHICS OF RELIGION PHOTOGRAPHY (AS only) PHYSICS PHYSICAL EDUCATION PRODUCT DESIGN: GRAPHICS WITH MATERIALS TECHNOLOGY PRODUCT DESIGN: TEXTILES PSYCHOLOGY SOCIOLOGY SPANISH
---	--	---

- * These subjects are taught at John Hampden Grammar School
- ** This subject is taught at Sir William Borlase's Grammar School, as part of the SBP scheme
- *** This subject is taught at Wye Valley School, as part of the SBP scheme

The Year 12 **Enrichment options** on offer for 2012 are:

COMMUNITY SPORTS LEADERSHIP AWARD CREATIVE iMEDIA (Year 1) CRITICAL THINKING AS LEVEL GENERAL STUDIES AS LEVEL	ITALIAN GCSE (from scratch) LATIN GCSE (from scratch) YOUNG ENTERPRISE
---	--

In Year 13, we ask students to select three of their AS subjects to take on to A Level. The final decision on which subject(s) to drop is made in January of Year 12. However, we pride ourselves on being flexible. For example, high flyers may, if possible, take four AS subjects on to A2 while some students may find two A Levels accompanied by a new AS a more sensible course of study.

In addition to A Levels, Year 13 students are offered the opportunity to take an Enrichment and Extension option. Those on offer for 2012 are:

ADVANCED EXTENSION AWARD in Maths CLASSICAL GREEK GCSE (from scratch) CREATIVE iMEDIA (Year 2)	EXTENDED PROJECT QUALIFICATION (EPQ) FOOD ENRICHMENT (world cuisine)
--	---

Extra-Curricular Opportunities in WHS Sixth Form

Volunteering to Help	Sports and Dance	Clubs and Societies	Arts, Music & Performance	Leadership
<ul style="list-style-type: none"> • SPAs • Patrol Senior Prefects • Academic Assistants (ACAs) • ICT Senior Prefects • Student Ambassadors • WVA Volunteers • Maplewood • Horizons • Hospital • Hillcrest • Verney Avenue • Careers Monitors • Library Monitors • Science Club helpers • Maths Club assistants • Art Dept helpers • Sixth Form Ball/ Leavers' Book helpers • Backstage for all productions • Charity Representatives • Environmental Representatives 	<ul style="list-style-type: none"> • Autumn & Spring terms: • Hockey • Indoor Hockey • Senior Netball • Senior Badminton • Table Tennis • Fencing • Rugby • Swimming • Basketball • Cross Country • Gym Squad* • Football • Dance Performance Group* • Senior Dance Club • Street Dance • Summer term: • Tennis • Rounders • Athletics • Cricket • Fitness Studio (all year) • Trampolining (all year) • Cheerleading (all year) 	<ul style="list-style-type: none"> • Debating Society • Christian Union • Islamic Union • Bollywood Club • Psychology Society • History and Classics Society • Latin Club • Maths Support • English Drop-in • Sixth Form Reading Group • Politics Society • The Spanish Culture Society • Japan Club • Medical Society • Film Club • Literary Theory Group • Think Global, Act WHS • Ultimate Frisbee 	<ul style="list-style-type: none"> • School Play * • School Musical * • Female parts in JHGS/RGS musicals * • Hi-Lights Dance & Gym Festival or 'Energize' • Pantomime • Carol Service • Chamber Choir * • Sixth Form Choir • Concerts x 3 • Jazz Band # • Senior Orchestra ~ • Concert Band ~ • Guitar Ensemble ~ • Flute Ensemble ~ • Chamber Music groups # • Joint concerts with RGS ~ • Concerts in the Community • Bailey Murphy Competition Choirs 	<ul style="list-style-type: none"> • Student Leadership Team • Deputy House Captains • Form Captains • Senior Prefects • Year & School Council Reps • Student Ambassadors • SPAs • Gym Captain • Dance Captain • Games Captain • Maths Captain • ICT Captain • Directors of Y8 Drama Festival • Young Enterprise Directors • Leadership of any club or society • World Challenge • CSLA • Development Ambassadors • Guild Captain

- * By audition or by trial - except for backstage volunteers who are all welcome!
- # By invitation or self-motivation
- ~ Grade 5/6 and above

As well as all the above, individual departments run subject-based competitions. Economics, for example, run the Bank of England Interest Rate Challenge.

Choosing A Levels at Wycombe High School

Selecting your Options

One of the great pleasures of the Sixth Form is the fact that you can choose your subjects. At GCSE you had a certain amount of choice but this was necessarily limited: there are some compulsory National Curriculum subjects. Now, the world is your oyster - almost. Choosing AS subjects requires some thought. What follows is some guidance on how to choose, and some consideration about constraints on your choices. The Appendix to this booklet includes some information on university courses which may also be relevant in making your decision.

On the whole, five questions need thinking about when choosing a subject:

- 1 Do I like the subject?** One could go further than that: you probably love it - you are even passionate about it. Passion is what universities are looking for. This subject is something you may be studying for two years, and possibly even taking further. So much of Sixth Form work depends on self-motivation - background reading, for example - that you need to want to do it.
- 2 Am I good at the subject?** You have to qualify, with a B grade minimum at GCSE level (and an A grade in Maths GCSE if you wish to do Maths A Level). Full details about qualifying are found further on in this booklet. You need to be ambitious to succeed, and for that, you need to be realistic that you are doing something you are actually good at. It is important to ask your teachers for an honest opinion about your ability in a subject before taking it up at A Level.
- 3 Put together, do my choices form a balanced combination?** If you are selecting three science subjects, consider choosing an arts or humanity subject as your fourth option. It is also very important not to select four subjects that employ the same skills: four practical subjects will involve an insurmountable amount of work. Four essay subjects will do the same. The time involved in doing such combinations will become

unbearable. As a guideline, two subjects employing the same skills should be a maximum. Please also consider balancing 'new' subjects with old. As a guideline, no more than two subjects should be ones that are 'new'.

- 4 Do at least three of my subjects continue to A2?** You will notice from the list on page 8 that some of our options are offered only as an AS. Please select only one of these if you are doing four AS subjects; you may not select any of them if you are only doing three subjects.
- 5 Have I thought about my future?** The vast majority of students do not know what they will be doing when they are 21. That is entirely normal, and does not matter. On the whole, career plans 'emerge'. What matters is that you do your best at each stage. In doing A Levels you will find the area you're really passionate about; at university or after, hopefully you will discover a vocation. Most universities just want good grades at A Level; most employers want a good degree, the subject matter of which is less important than the degree class. A student can delay their choice of career yet still have a wide range of opportunities.

But in many cases, students do need to think about the future now, because:

- (a) Some courses have very specific requirements.** For example, it would not be possible to read Physics or Economics or Computing at most universities if you had not done Maths A Level, nor would it be possible to do Medicine without Chemistry A Level and at least one other science. On the whole, university requirements tend to involve the sciences or technology, so if you are thinking about being, for example, an architect, an engineer, a vet, a doctor, a midwife, or a physiotherapist, please check that your choices leave bridges open as opposed to closed. The Appendix to this pack provides some guidance, though you should also consult the Careers and Higher Education Library in the Miller Block.

- (b) Russell Group of universities prefers certain subjects.** The Russell Group of twenty leading UK universities (including Oxford, Cambridge, Birmingham, UCL and Imperial) published its first-ever guide to post-16 subject choices in February 2011. This guide can be found at <http://www.russellgroup.ac.uk/informed-choices.aspx> and should be read in full since, 'Your choice of options will be critical in determining the university courses open to you.'

This guide, *Informed Choices*, identifies certain subjects as 'facilitating' entry to competitive universities: these are Maths, English, Biology, Physics, Chemistry, Languages, History and Geography. It also distinguishes between 'hard' traditional or theoretical subjects (eg Economics, Computing, Music) and 'soft' practical or vocational subjects (eg Business Studies, ICT, Music Technology). The guide says that at least two of a student's three A Levels should be 'hard' or 'facilitating' subjects if she wishes to keep her university options as open as possible (either here or abroad, since the same is true of American Ivy League universities). Unfortunately (or diplomatically) the guide does not elaborate explicitly on which subjects it considers 'soft'. However, Cambridge and LSE have published on-line lists of their 'non-preferred' subjects that may help you in your decision making.

To Assist in your Decision Making (if you are a student at WHS)

- Our Careers and Higher Education Library is extensive and is situated on the ground floor of the Miller Block. It is open to all students and is usually empty of Sixth Formers at lunchtime, should you wish to do some research.
- You may wish to make an appointment to speak with our Pathways Adviser, Mrs Hayward, or with our attached Connexions Adviser.
- You have this 'Into the Sixth Form' Booklet and the subject flyers which you should read carefully.

- You will have an assembly and PSHEE lessons on selecting options.
- Your Tutor will spend time looking at your options.
- During the 'Into the Sixth Form' Evening' - Wednesday 19 October - you will be able to talk with Subject Leaders, and with Sixth Formers doing the subject you are interested in.
- Students in WHS Year 11 will be provided with an opportunity to 'shadow' the Sixth Form for a day, and attend a lesson in each of the subjects that you think you might be interested in.
- Other Year 12 and 13 students in your tutor group will be a valuable source of advice.
- Your Year 10 exam results and your Year 10 report will provide you with an indication of where your talents lie, and whether or not you will thrive in a subject at A Level.
- Your Year 11 Student Progress Check will provide a further indication of your ability in a subject.
- During the Year 11 Parents' Evening, you will be able to consult with your teaching staff directly about whether you are suited to A Level study in their subject.
- Once you have submitted your application form, you will be invited to have an informal chat about your choices with a senior member of staff.
- Your GCSE Mock exam results and Year 11 report in the Spring term should provide a further indication as to whether you have made the right AS selection.
- Finally, after your GCSE exams, we run an Access Day, when you attend a lesson in each of your AS subjects - a final opportunity, as it were, to confirm that you have made the right choice.

Choosing A Levels at Wycombe High School

Constraints on your Choices

In one sense, we have very few: Wycombe High School operates a free choice without predetermined option blocks. Once all of your choices are entered on the system, the computer sets up the five teaching blocks. However, there are a few constraints:

- 1 Firstly, if very few people opt for a subject, it is financially not viable for us to run that subject. There is no predetermined cut-off number: we consider each course individually. Sometimes we agree to run a course but on a reduced number of teaching periods; sometimes we work with our neighbouring schools to put on a course. In other cases, especially if just three or four students wish to do that subject, we may have to ask you to make another choice. You will know this is the case in the spring term.
- 2 It may just not be possible to timetable the combination of subjects you have chosen. This does not affect subjects with big up-takes: they tend to run a class in each block. This situation tends to arise if a student chooses several minority subjects where there is just one class for each subject. If you chose Latin, Music, Modern History and German, for example, timetabling problems may ensue. We will let you know as early as we can should this be the case. In many cases there is often an acceptable compromise. In the past, for example, students have been asked to switch from Modern History to Early Modern History, or from Maths Mechanics to Maths Statistics.
- 3 In FOUR cases, combinations of subjects are not permitted. Students may not do:

Both Business Studies and Economics
Both Maths Mechanics and Maths Statistics
Both Early Modern History and Modern History
Both Music and Music Technology
- 4 The fourth constraint is the fact that you do need to qualify for the courses you choose. Please check under our **Entry Requirements to WHS Sixth**

Form. Broadly speaking you need to qualify overall for the Sixth Form by obtaining 360 points from your best eight GCSEs. You must also have GCSE English Language and Maths at grades A* to C. Finally you must then qualify individually for at least three AS subjects. If, on Results Day, you have not achieved a B grade for one of your options (and an A grade in the case of Maths), we shall ask you to choose another subject. While this might sound harsh, experience does show that someone with a C or D grade at GCSE will not succeed at AS.

- 5 Finally, if a student opts to take a subject at another school (eg Computing, German, Dance, Music Technology, Food) two constraints apply: she may only take one subject elsewhere and if she does so, may only take a maximum of four AS levels, and no enrichment option. The reason behind this is purely practical: we need to allow time to transfer from one school to another. You may be asked to contribute towards the transport costs.

Frequently Asked Questions

Can I change my mind about my options?

It is perfectly acceptable to change your mind after handing in your application form. However, please change your mind early! For preference, please tell us before the option blocks are 'fixed' by the computer. You will then be accommodated. Fixing the blocks happens in the late spring term. If you change your mind after that, there is no guarantee that you will be able to do your new choices.

You will be accommodated as long as your new choice fits the option blocks and fits the set sizes. If twenty students have already decided to do that subject, then the answer might be no. Students may not change options once courses have commenced, although we try to be flexible for the first fortnight of the autumn term.

Can I do more than four AS subjects?

I want to do five.

Yes is the simple answer. If you get more than 446 points from your best eight GCSE, you can study five AS subjects. However, even with more than 446 points, most students do four AS subjects. The number of subjects - four - is not randomly chosen. Two factors go into this decision.

- Firstly, it reflects the reality of the workload of A Levels: while you might have a honeymoon period for the first month of Year 12 where the work seems light, by November most students are feeling the strain. Experience leads us to believe that four subjects at AS are just right.
- Secondly, we are reflecting University requirements: even Oxford and Cambridge only ask for four AS subjects followed by three A Levels - admittedly at A*AA grade. However, universities are also asking for proof of work experience, leadership skills, extra-curricular commitments and all the other things you can do in the Sixth Form. And for that, you need time.

Can I do only three AS subjects?

Wycombe High School operates an academic Sixth Form, and as a norm we would expect all of our students to rise to the challenge of four AS subjects. However, if you achieved between 360 and 391 points from your best eight full GCSEs, we feel a reduced timetable would be in your interests. We would require you to start on three AS subjects, supported by one or two enrichment courses. If you do well in those subjects you can always pick up a fourth AS in Year 13.

Can I pick up a new subject in Year 13?

You can only commence study in a subject at A2 if you have achieved at least a D grade in that subject at AS. However, we do allow able students to do an additional AS subject in Year 13, on top of their three or four A2 courses, as long as the timetable permits it.

Entry Requirements to WHS Sixth Form

Unless there are any extenuating circumstances, a student who wishes to study AS levels at WHS must:

1 Gain a minimum of 360 points in her best eight full-course GCSEs.

Full GCSE		Short GCSE	
A*	58	A*	29
A	52	A	26
B	46	B	23
C	40	C	20
D	34	D	17
E	28	E	14
F	22	F	11
G	16	G	8

2 Gain GCSE Maths and GCSE English Language at grades A* - C.

3 Meet departmental entry requirements in at least three AS subjects:

A student wishing to continue a GCSE subject to AS must have gained at least a B grade in that subject at GCSE. Maths is an exception: a student wishing to do Maths A Level must have gained at least an A grade in Maths GCSE. Business Studies students must attain a B in Business Studies, Maths and English Language.

4 Study three, four or five AS subjects depending on her ability, as measured by her best eight full GCSEs. Four subjects is the norm.

360 – 391 points	3 AS subjects and one / two enrichment options
392 – 445 points	4 AS subjects and an enrichment option, if she wishes
446 points +	5 AS subjects, if she wishes

We also offer eleven new subjects at AS that we do not teach at GCSE level. In these cases the following entry requirements pertain:

- Computing B grades in Maths and ICT GCSEs
- Economics B grades in English Language and Maths GCSEs
- Film Studies B grades in English Language and English Literature
- Geology B grade in Geography GCSE and /or B grades in Maths and BB in Science GCSEs
- Government & Politics B grades in English Language and/or History GCSEs
- Music Technology B grade in Music GCSE
- Photography B grades in Art and/or another Technology GCSE
- Physical Education B grade in PE and/or BB in GCSE Science & GCSE Additional Science, or B in Biology GCSE
- Psychology B grade in English Language and B in Maths GCSEs
- Philosophy & Ethics of Religion B grades in Religious Studies and/or Citizenship GCSEs*
- Sociology B grade in English Language and/or a humanity GCSE

* Applications from external candidate whose schools do not offer these subjects as GCSEs will also be considered.

Seven departments permit a student to do their subject at AS where the student has not done that subject at GCSE, as long as other criteria are met:

- Business Studies
- Classical Civilisation
- Drama and Theatre Studies

- D & T: Food Technology
- Geography
- History
- Music/Music Technology

- Product Design: Graphics with Materials Technology
- Product Design: Textiles

- B grades in Maths and English Language GCSEs
- B grade in English Literature GCSE
- Active participation in school productions and amateur dramatics, and a B grade in English Literature
- B grade in GCSE Biology or Chemistry & a passion for food
- B grades in Maths and BB in Science GCSEs
- B grades in English Language and in English Lit GCSEs
- Grade 6 Practical and Grade 5 Theory and active participation in ensembles in school.
- B grades in Art and/or another Technology GCSE (except Food)
- B grades in Art and/or another Technology GCSE (except Food)

Those opting for GCSE Italian need to be good linguists, measured by the fact that they gained at least an A grade in one Modern Foreign Language or Latin at GCSE.

Please note:

- Group sizes must be viable. In the event that a subject or course does not attract sufficient applicants, either at AS or A2, it may not run.
- External students applying with BTEC qualifications must note that admission to WHS is based on a student's point score from their top eight full-course GCSE results. They should also note that A*- C grades are required in GCSE Maths and GCSE English Language.
- Students who do not achieve a D grade at AS at the end of Year 12 will not be permitted to continue that subject to A2.

Year 13

Unless there are extenuating circumstances (like serious illness), a student wishing to progress on to Year 13 must have:

- D grades in at least two subjects at AS
- a 90% attendance rate in tutorials and lessons
- a 90% punctuality rate in tutorials and lessons

APPLICATION PROCEDURE

Internal Applicants Please complete the application form enclosed in this pack and return it, via your tutor, to the Head of Sixth Form by Tuesday 13 December 2011. Applications received after this date will be given every consideration but we cannot guarantee that we will be able to accommodate your AS choices. All internal applicants will be invited to have a short informal discussion about their choices with a senior member of staff.

External Applicants We are delighted to receive applications from students who are not currently at Wycombe High School. At present we reserve a minimum of 20 places a year for such external applicants. Where eligible applications for courses exceed the number of places available, places will be offered to students obtaining the highest average points score from their top eight GCSE (full course) results. If there is more than one student with the same score, home-to-school distance will be the final determinant.

External applicants are requested to complete the application form enclosed with this pack and return it to the Head of Sixth Form by Friday 27 January 2012. Please ensure that you have the correct postage on your envelope. Applications received after this date will be given every consideration but we cannot guarantee that we will be able to accommodate your AS choices.

We would also ask you to include with your application form:

- A letter outlining your reasons for wanting to study your chosen AS subjects and making it clear what it is about these subjects that interests you. You should also give details of how you have contributed to your school community whilst studying for GCSEs and outline what you feel you could contribute to the Sixth Form at Wycombe High School.
- A copy of your latest report or Record of Achievement including your predicted GCSE grades.

All external applicants will be invited to the school on Friday 16 March 2012 for the school's Open Morning.

Appendix 2 - 2011 Leavers' Destinations

Destination	Course	Deferred Entry 2012 / Reapplying	Gap Year / Employment
Abertay Dundee University	Psychology		
Academy of Contemporary Music, Guildford	Music and Industry Management		
Anglia University	History		
Anglo European College of Chiropractic Human Sciences	Chiropractic Medicine		
Bath Spa University	Creative Arts		
Bath University	Business and Economics		
Bath University	Psychology		
Bath University	Chemistry		
Birmingham City University	Legal Studies		
Birmingham University	Sport, PE & Coaching Science		
Birmingham University	Economics and Social History		
Birmingham University	Business and Management		
Birmingham University	English and Creative Writing		
Birmingham University	Geography and Geology		
Bournemouth University	Events Manager		
Bournemouth University	Sports Development and Coaching Science		
Bournemouth University	Accountancy and Finance		
Bradford University	Biomedical Science		
Bradford University	Occupational Therapy		
Brighton University	Architectural Technology		
Bristol University	Politics		
Bristol University	Veterinary Nursing	D	
Brunel University	Education Studies		
Brunel University	English Literature and Journalism Studies		
Brunel University	Economics		
Bucks New University	Art Foundation		
Bucks New University	Sociology and Criminology		
Bucks New University	Sociology and Criminology		
Bucks New University	Art Foundation		
Bucks New University	Art Foundation		
Bucks New University	Art Foundation		
Bucks New University	Art Foundation		
Bucks New University	Art Foundation		
Bucks New University	Police Studies		
Bucks New University	Art Foundation		
Bucks New University	Art Foundation		
Cambridge University - Fitzwilliam	Spanish and Italian	D	
Canterbury Christchurch University	Music		
Canterbury Christchurch University	History		

Destination	Course	Deferred Entry 2012 / Reapplying	Gap Year / Employment
Cardiff University	Business and Economics		
Cardiff University	Psychology		
City University	Law		
City University	Optometry		
City University	Law		
Coventry University	History		
De Montfort University	Games Arts		
De Montfort University	Business Management		
De Montfort University	Art Foundation		
Dundee University	Psychology		
Durham University	History		
Durham University	History		
Durham University	History and English		
Durham University	Business and Management		
Durham University	Geography		
East Berkshire College	Travel and Tourism		
East London University	Psychology		
East London University	Biomedical Science		
Employment			E
Employment - working part time hours until January then considering full-time employment			E
Employment and travelling			E
Employment as Care Nurse			E
Essex University	Film Studies		
Essex University	Dental Hygiene		
Exeter University	French and Spanish		
Exeter University	Psychology		
Exeter University	English		
Exeter University	Politics		
Exeter University	Drama		
Exeter University	Classical Studies		
Gap year			G
Gap year - applying for Ancient History		R	G
Gap year - reapplying for Medicine		R	G
Gap year - reapplying for Radiography		R	G
Gap year - reapplying through UCAS		R	G
Gap year - reapplying to study Spanish and Portugese at Oxford		R	G
Gap year - reapplying to university		R	G
Gap year - resitting Chemistry A Level to reapply for Optometry		R	G
Gap year - travelling through the Middle East, then University		R	G

Appendix 2 - 2011 Leavers' Destinations

Destination	Course	Deferred Entry 2012 / Reapplying	Gap Year / Employment
Gap year before Drama school			G
Gap year -Swimming teacher and lifeguard and then applying to read Psychology			G
Gap year then applying to university		R	G
Grant Thornton	Audit Trainee (ACCA) - employment with training		E
Grant Thornton	Audit trainee (ACCA) - employment while training		
Harper Adams University College	Veterinary Nursing		
Hertfordshire University	Biomedical Sciences		
Hertfordshire University	Pharmacy		
Imperial College	Chemical Engineering		
India	Engineering		
Keele University	Psychology and Education Studies		
Kent University	Biomedical Science		
Kent University	Classics		
Kent University	Sport and Exercise Management		
Kent University	Pharmacy		
King's College	Medicine		
Kingston University	Law		
Leeds College of Art	Interior Design		
Leeds University	History		
Leeds University	Maths		
Leeds University	Russian and Politics		
Leeds University	Food Studies and Nutrition		
Leicester University	Criminology		
Leicester University	Science Foundation		
London College of Fashion	Fashion Retail Management		
London College of Fashion	Hair and Make up for Fashion		
London School of Economics	Law		
London South Bank University	Chemical and Process Engineering		
London South Bank University	Operating Practice Nursing		
Loughborough University	Geography and Management		
Loughborough University	Sociology		
Loughborough University	Retail, Marketing and Management		
Loughborough University	IT Management		
Manchester University	Textiles Science & Technology		
Manchester University	Biomedical Sciences		
John Lewis, Head Office, London			E
Middlesex University	Accountancy		
Newcastle University	Psychology		

Destination	Course	Deferred Entry 2012 / Reapplying	Gap Year / Employment
Newcastle University	Marine biology		
Newport University	English and Creative Writing		
Northumbria University	Geography		
Nottingham Trent University	Fashion Communication and Promotion		
Nottingham Trent University	Primary Education		
Nottingham University	Civil Engineering		
Nottingham University	Nursing Science		
Nottingham University	Politics		
Nottingham University	Maths and Management Studies		
Nottingham University	Law		
Nottingham University	Business Management		
Nottingham University	Physics with Astronomy		
Nottingham University	Media Communication		
Nottingham University	Classics		
Nottingham University	History		
Nottingham University	Natural Sciences		
Oxford Brookes University	Geography		
Oxford Brookes University	Art Foundation		
Oxford Brookes University	Biological Sciences		
Oxford Brookes University	Primary Education		
Oxford University - Worcester College	Law		
Oxford University - Worcester College	Engineering Science		
Oxford University - Jesus College	English Literature		
Portsmouth University	Drama and Performance		
Portsmouth University	Business		
Queen Mary's University of London	International Relations		
Queen Mary's University of London	Biology		
Queen Mary's University of London	Medicine		
Quest Business College	Personal Assistant		
Quest Business College	Business Training		
Reading University	Pharmacy		
Reading University	Geography		
Reading University	Food Science and Nutrition		
Reading University	Food Science and Nutrition		
Royal Holloway	Geography		
Royal Holloway	Latin		
Royal Holloway	Geology		
SOAS	History		
SOAS	Hindi		
Southampton University	Psychology		
Southampton University	Mechanical Engineering		
Southampton University	English and Film Studies		
Southampton University	Film and English Studies		

Appendix 2 - 2011 Leavers' Destinations

Destination	Course	Deferred Entry 2012 / Reapplying	Gap Year / Employment
Solent University	Interior Design		
Sports Direct - Supervisor			E
St Andrews University	French and Latin		
Surrey University	Sociology and Criminology		
Surrey University	Hospitality Management		
Sussex University	Media Practice		
Swansea University	Geography		
Trainee Dental Nurse			
UCL	Architecture		E
UCL	Archaeology		
University of Aston	Accountancy and management		
University College Falmouth	Art Foundation		
Unknown			
Warwick University	History of Art		
Warwick University	Biological Sciences		
Warwick University	Biomedical Sciences		
Warwick University	French and History		
Warwick University	Psychology		
Warwick University	Economics		
Westminster University	Law		
Working full-time at Flowerland, Bourne End Garden Centre			E
Working in a health company - logistics			E
York University	Maths and Economics		



APPENDIX 3 - CHOOSING A LEVEL SUBJECTS

With A View To Higher Education And Careers

This table provides only a general guideline and is not intended to be exclusive. These are samples of some of the many kinds of courses which WHS students have taken after leaving school. **Please note** that in the information which follows, minimum qualifications only are given. In practice, high grade results, extra qualifications, work experience and particular personal qualities are often sought, especially by the professions.

NB: Students should seek professional advice from the school if they have any queries about their choice of course and course combinations. The best books on the subject are *Degree Course Offers - 2012 entry* and *Choosing your Degree Course and University*, both by Brian Heap. You are also strongly recommended to read *Informed Choices*, the on-line guide to post-16 subject choices written by the Russell Group of twenty leading UK universities, which can be found at <http://www.russellgroup.ac.uk/informed-choices.aspx>

University Course or Career	A Level (A2) Requirement(s)	Recommended/Useful other A Levels	Additional notes
Accountancy	A Level in Maths Statistics is preferred at some universities.	A Levels in Maths Statistics and Economics are particularly suitable.	It is very common to train as an Accountant after a degree in a non-related subject. A good grade at GCSE Maths is essential.
Agriculture / Forestry / Horticulture	Two science subjects for degree courses - but these can include Maths and Geography.	Two of Chemistry, Biology, Geography, Maths Stats should be considered.	Entry is possible at all levels, from no qualifications to a degree, for which two science A Levels are the usual minimum requirements. Work experience is important.
Archaeology	Chemistry may be required for a BSc course.	Chemistry, Latin, Classical Civilisation, History	Work experience is important.
Architecture	Maths and / or Physics are required for certain courses. If Art A Level is not taken an Art portfolio may be requested.	An ideal combination of A Levels is Physics, Mathematics, preferably Further Maths, Art and one other subject.	Design ability is essential, as is a proven interest, often reflected in a portfolio of work including drawings, sketching and photographs of buildings and places of architectural interest.
Art	No specific subjects required.	Art or Product Design: Graphics or Textiles, in order to generate the portfolio of work which is necessary for admission onto a Foundation Course in Art.	Art & Design Foundation Courses are usually required prior to entry on to a practical degree in Art.
Art History	History is required for some courses.	Art, History	You might consider GCSE Italian as an enrichment course.
Biochemistry	Chemistry and one other science.	Biology, Physics, Maths Statistics	
Biology	Chemistry and Biology.	Biology, Physics, Maths Statistics	Three science / maths subjects are recommended.
Business Studies / Business Administration/Business Management	Maths is required or preferred by some universities.	Business Studies or Economics, Maths Stats. A Modern Foreign Language is required for some international courses.	Consider Young Enterprise as an Enrichment Subject. Ensure that you have at least a B grade at Maths GCSE.
Chemistry	Chemistry and another science.	Biology, Physics, Maths Stats	

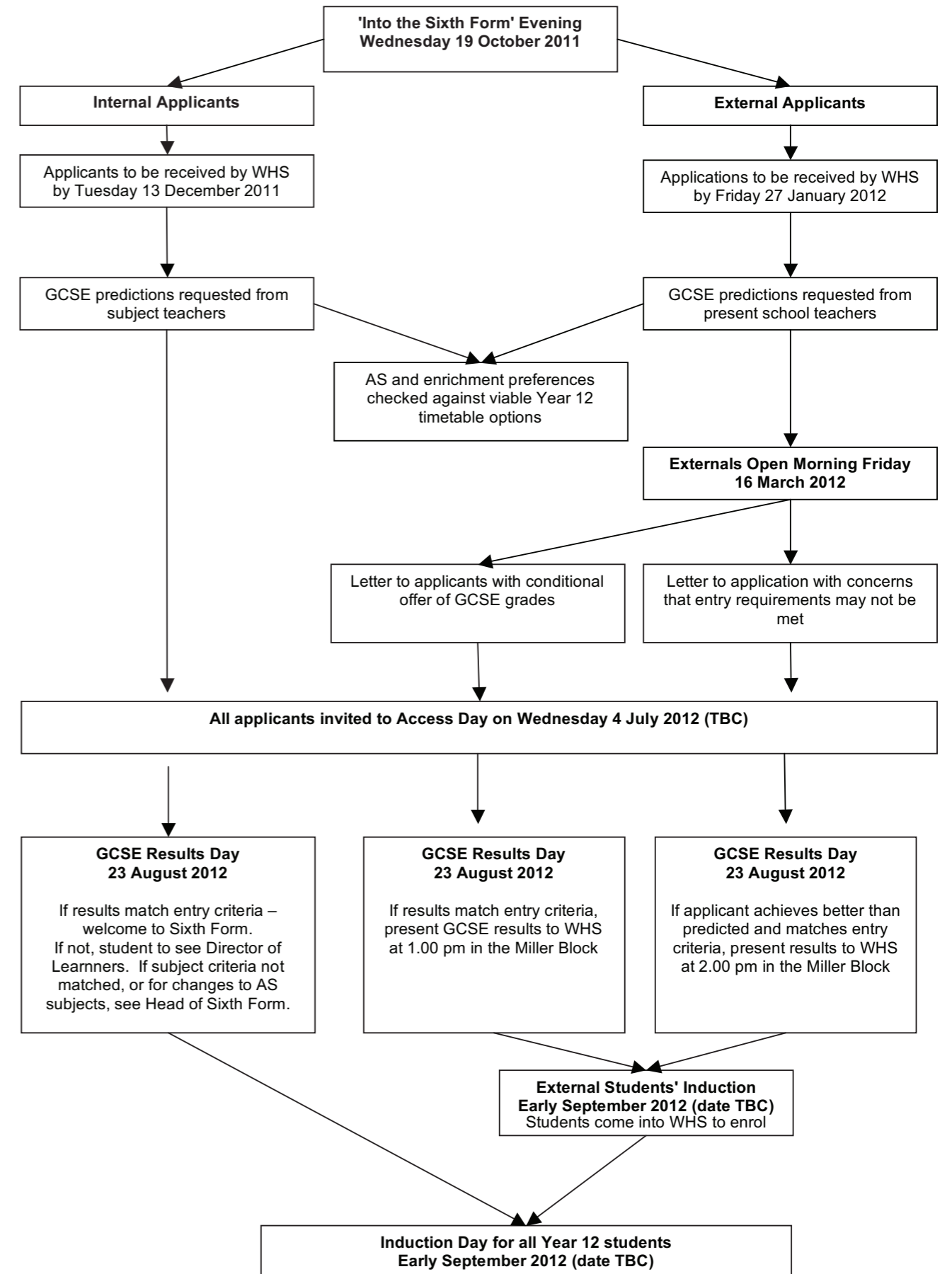
University Course or Career	A Level (A2) Requirement(s)	Recommended/Useful other A Levels	Additional notes
Classics / Classical Civilisation	Latin may be required for some courses, but most do not stipulate this.	Latin and / or Classical Civilisation are strongly recommended. History / English Literature / Modern Languages also work well.	Classics courses vary widely, and some require no knowledge of Latin or Greek. Greek can be learned 'from scratch' at University. However, you may wish to take Classical Greek GCSE in Year 13.
Computer Science	A Level Maths is essential for many courses.	IT and Physics are useful but not essential.	A good Maths GCSE is desirable if the subject is not taken at A Level. Some degree of manual dexterity is looked for - which can be demonstrated by playing a violin, needlework, cake decorating ... Work experience is important.
Dentistry	Three Science A Levels normally sought. Chemistry is vital and two from Physics, Biology and Mathematics highly desirable.	Physics, Biology, Maths	
Dietetics	Chemistry is required by most institutions. Biology is required by some.	Food Technology	
Drama	English Literature or Theatre Studies may be required or preferred.	History, a Modern Foreign Language are all suitable.	A rich portfolio of experience on the stage and at the theatre should be acquired.
Economics/ International Economics	Maths Stats is often a course requirement. Economics or Business Studies may be stipulated as preferred subjects.	Economics, Maths, Further Maths, Business Studies, History, Modern Language	Consider Young Enterprise as your Enrichment Subject.
Engineering	The majority of University engineering courses require Physics and Mathematics at A Level.	Possibly dependent upon choice of engineering. Economics and Geography are useful for Civil Engineering. A Level Design and Technology is increasingly useful.	Courses cover a very wide range including electronic, mechanical, civil, chemical and production engineering as well as the engineering technologies of robotics, artificial intelligence, etc. Many courses are supported by sponsorship schemes and industrial training with many opportunities for employment existing in the UK and abroad.
English Literature / English Language	English Literature	Any combination of Arts / Science subjects.	Admission tutors will expect students to have read widely outside the syllabus.
Environmental Studies / Science	Biology and Chemistry usually preferred; Geography is a requirement for some courses.	Maths Stats, Chemistry, Biology, Geography	
Food Science	Sciences, including Chemistry.	Biology, Physics, Maths	
French	French	Second Modern Language, English, Latin, History	
Geography	Geography. One or more sciences may be required for BSc courses.	Maths, Chemistry, Biology, Economics	You might consider Geology AS

University Course or Career	A Level (A2) Requirement(s)	Recommended/Useful other A Levels	Additional notes
Geology	Two or three subjects from Maths, Biology, Chemistry, Physics usually required. German	Physics, Chemistry, Biology, Geography Latin, History	You might consider Geology AS.
German	German	Second Modern Language, English, Latin, History	
History	History	Modern Language, Latin, English, Economics, Classical Civilisation, Music	
Journalism	No specific subjects required.	A literary subject at A Level an advantage but not essential. You should choose subjects that you are good at, and consider Critical Thinking as an enrichment option.	Three A Levels usually needed for entry to a NCTJ Course at 18; students will be competing with graduates for these places. Journalists come from very varied academic backgrounds. Scientists, for example, may work as editors or reporters for specialist journals.
Land Management Law	No specific subjects required. Any three 'academic' A Levels with high grades are usually required. Law A Level is not required and considered a disadvantage by some university departments.	Maths, Economics, Geography Critical Thinking is very useful indeed. History, Politics, English Literature, a Modern Language, Latin: all are useful. Otherwise, do what you are good at.	It is possible to do a Law Conversion Course after a degree in most subjects, although this requires an extra year of study. Some universities now require an additional test (LNAT) to be taken for entry to Law. The LNAT is very similar to Critical Thinking.
Management Studies	No specific subjects required.	Mathematics Statistics A Level is most useful, so too are Languages.	Consider Young Enterprise as an Enrichment Subject
Materials Science / Metallurgy	Maths, Physics and / or Chemistry A Levels required on most courses.	Biology, Geography	
Mathematics	Mathematics Further Mathematics	Physics	
Medicine	Chemistry and one of Biology / Maths / Physics. In practice, it is best to take two of these.	Each institution varies: read Brian Heap carefully. Some universities like a Modern Language or a Humanity as the fourth AS to show breadth. If only two sciences are studied at A2 Level, the third subject must be a rigorous 'academic' one.	Competition is fierce, and a prerequisite for studying medicine is excellent GCSEs – you should aim to achieve at least 6 A*s. Universities require an additional test (BMAT or UKCAT) to be taken for entry to the course. Critical Thinking is very useful indeed since it is very similar to the BMAT and UKCAT. Work experience is essential.
Midwifery	At least one science A Level although Chemistry and Biology are preferred for the degree course.	Any, though Sociology and Psychology would go well.	Work experience is essential but hard to do at your age. Consider Maplewood, Horizons, and a job in a care home for the elderly.

University Course or Career	A Level (A2) Requirement(s)	Recommended/Useful other A Levels	Additional notes
Modern Languages	A Modern Foreign Language to demonstrate linguistic ability, even if you do not intend to study this language at university .	A second Modern Foreign Language, English Literature, History, Latin.	A great range of languages is on offer at many Universities: for example, Arabic, Danish, Russian or Swedish can all be learned 'from scratch'. However, it is important to demonstrate linguistic skills. Consider Critical Thinking or GCSE Italian or Spanish as your Enrichment Subject
Music	Music plus specified instrumental grade.	Any - but musicians in the past have seemed to do History, Maths, Latin, Classics, English.	Active participation in ensembles in and out of school
Nursing (Degree)	At least one science A Level although Chemistry and Biology are preferred.	Sociology, Psychology	Work experience is essential but hard to do at your age. Consider Maplewood, Horizons, and a job in a care home for the elderly.
Occupational Therapy	A Level Sciences are increasingly sought.	Biology, Chemistry	
Optometry	Two or more sciences.	Maths may be considered an acceptable alternative to sciences - you must check.	Work experience will be important.
Oriental Studies	No specific subjects required.	Languages, ancient or modern are desirable. History is useful.	Languages such as Chinese, Japanese, Arabic and Turkish may be studied 'from scratch'.
Pharmacy	Chemistry and two of Physics, Biology and Maths.	Physics, Biology, Maths	Mathematics is essential at GCSE if it is not taken at A Level, for entry to the degree course. Work experience will be important.
Philosophy	No specific subjects required.	RS, English, Maths, Modern Language, Latin, History, Classics	
Physics	Physics, Maths	Further Mathematics	
Physiotherapy	A minimum of one science A Level - usually Biology.	One or more further Science A Levels, Physical Education Government and Politics, History,	Competition is fierce often from mature students and graduates, since relatively few universities offer this course. Good grades are important. Join the Debating Club.
Politics	No specific subjects required, though some courses specify a preference for History or English A Level.	Economics, English, Modern Language, Maths	
Psychology	At least one Science (Chemistry, Biology) and / or Mathematics, especially if it is a BSc course.	Maths Statistics, Physics, Psychology	Psychology A Level is not essential and it is possible to study Psychology at University from scratch. University courses often have a strongly scientific core.
Sociology	No specific subjects required.	Sociology, Economics, Maths, Geography, Psychology, Politics, History	

University Course or Career	A Level (A2) Requirement(s)	Recommended/Useful other A Levels	Additional notes
Sports Science	One but preferably two science A Levels.	Useful A Levels might be Biology, Chemistry, Physical Education, Maths Stats	Very competitive and high A Level offers are made by several universities. You might consider CSLA as an enrichment.
Sports Management	No specific subjects required.	Useful A Levels might be Physical Education, Business Studies, Biology, Economics, Maths Stats, Sociology.	Entry at all levels. Management schemes seek academic A Levels. Sport & PE A Level is not essential. However, active involvement in the school sports is recommended. You might consider either Young Enterprise or CSLA as your enrichment.
Teaching - Primary or Secondary Education	A Levels in chosen major subject(s).	Any - but for Primary and Secondary Teaching students do need to demonstrate an academic competence in the subject in which they propose to specialise, and should remember that mainstream National Curriculum subjects are essential. That is, one cannot teach Sociology, for example, in a Primary School.	Mathematics, Science and English Language GCSEs at grade C or above are needed, plus a minimum of any two subjects at A Level. Teaching can either be entered via an undergraduate BEd course or a postgraduate PGCE. The latter is more common for secondary teaching. A portfolio of work experience with children is important. You should consider volunteer work in a primary school or Horizons.
Theatre Studies	No specific subjects required.	Theatre Studies, English Literature, Classical Civilisation, Art, Product Design: Graphics, Music, Maths, Physics.	A distinction could be drawn between Arts Administration, Acting and the Technical side such as Stage Management, Lighting and Sound Design. For the first two, any A Levels can be considered. Theatre Studies would be very useful. For the technical example given, Maths or Physics might be sought; students may wish to consider Music.
Theology	Religious Studies is required for some courses.	RS, Early Modern History, Latin, Classical Civilisation, a Modern Language, Sociology	You might consider Critical Thinking as an enrichment, and attend Islamic and Christian Union meetings to widen your experience.
Veterinary Science	Chemistry is essential. Requirements then vary from course to course but usually include Biology, and Maths or Physics.	Physics, Maths, Biology, Critical Thinking	Highly competitive - excellent GCSE and A Level grades are required, as is a solid portfolio of work experience. Universities require the BMAT/UKCAT test, for which Critical Thinking is good preparation.
Zoology	Biology and Chemistry	Any subject	

Appendix 4 - Dates and Procedures





Wycombe High School

Marlow Road High Wycombe Bucks HP11 1TB

Headteacher: **Mrs S N Cromie**

Tel: **01494 523961** Fax: **01494 510354**

Email: office@whs.bucks.sch.uk Web: www.whs.bucks.sch.uk

Fortiter, Fideliter, Feliciter



**INVESTORS
IN PEOPLE**

